



Introduction

SWAG (SourceWare Archival Group) is a collection of source code and program examples for the PASCAL programming language. The material has been donated by various PASCAL programmers from around the world, who desire to contribute to the advancement of one of the greatest programming languages there is. MANY THANKS to all who have contributed. As such, **NO CHARGE OF ANY KIND IS PERMITTED FOR THIS WORK.**

The material has been collected from various network conferences worldwide, and organized according to subject. New material is added quarterly, and new SWAG packets are available from various BBS sources on a FIRST call basis.

[Getting Started](#)

Using SWAG for WINDOWS

[General overview](#)

[Main files screen](#)

[Snippets screen](#)

[Viewer screen](#)

[Command Summary](#)

[SWAG Support](#)

[About the program](#)

[Conclusion](#)



Getting Started

The program **SWAGWIN.EXE** is a WINDOWS 3.x executable program that will allow you to read, extract or print the contents of SWAG packets. These packets are organized according to subject, with each one containing a number of PASCAL "snippets" on that subject. In the rest of this document, I'll refer to the program as "SWAGWIN".

The simple way to install the software is to use the SETUP program that came with the distribution archive. The SWAG packets should be placed ALL together in a directory on your disk. It is recommended that you create a single directory named '**SWAG**'.

- use the DOS command to create a directory: **mkdir c:\swag**.
- Place the .HLP file and SWAGWIN.EXE in this directory.
- Create a sub-directory : **mkdir c:\swag\files**
- Unpack the distribution archives and place all of the files with the extension of "*.SWG" in this directory.

Start WINDOWS and create an ICON for **SWAGWIN**. It can be placed in any GROUP that you choose. Also, you can use the SETUP program included in the distribution archive to setup **SWAG for WINDOWS** for you.



General Overview


SWAG files (**.SWG**) are highly compressed archives using a specialized LZH format :

```
SwagHeader =  
RECORD  
HeadSize : BYTE           size of header  
HeadChk  : BYTE           checksum for header  
HeadID   : ARRAY (1..5) OF CHAR  compression type tag  
NewSize  : LONGINT        compressed size  
OrigSize : LONGINT        original size  
Time     : WORD           packed time  
Date     : WORD           packed date  
Attr     : WORDtab        file attributes and flags  
BufCRC   : LONGINT        32-CRC of the Buffer  
Swag     : STRING(12)     stored SWAG filename  
Subject  : STRING(40)     snippet subject  
Contrib  : STRING(35)     contributor  
Keys     : STRING(70)     search keys  
FName    : PathStr        filename (variable length)  
CRC      : WORD           16-bit CRC (follows FName)  
END;
```

Each archive contains any given number of snippets each with a header as described above, and following is a buffer of compressed text. You **CAN NOT** read **.SWG** files with any normal archive program due to the structure of the header. However, the SWAG SUPPORT TEAM provides numerous utility programs that will allow you to manipulate the files in various ways. Additionally, you'll find various sources in SWAG to play with the headers if you want to.



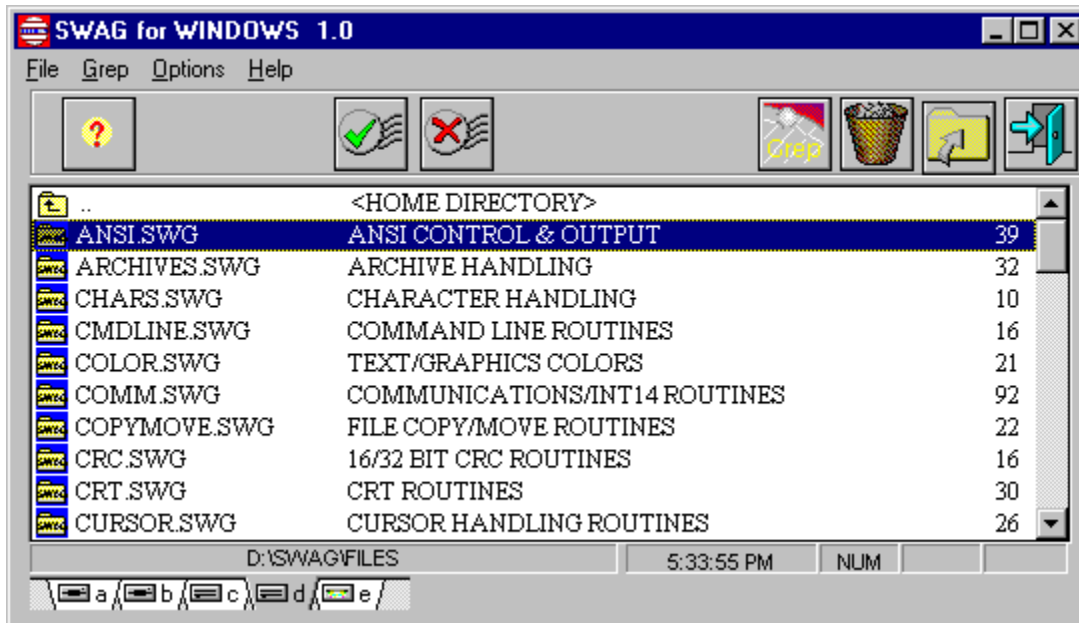
Main Files Screen

Using the program is really very simple. Just execute it, and you will be presented with a directory of all of the **.SWG** files in the directory that **SWAG for WINDOWS** is located in. If you have **.SWG** files elsewhere on your disk, or for that matter, any disk on your system, you can move around the disk to find them by selecting the **".."**  file which will take you to the PARENT directory. Use the HOME, END and the arrow keys to maneuver around.

ALSO,

The directory window is search key sensitive. This means that if you have **.SWG** files or directories listed in the directory box, you can just type the name of the file you want. For example, pressing 'A' will place you at the first entry starting with 'A'. Press 'N', and you will jump to the entry with 'AN...' if you have one. If NOT, you will jump to the first file starting with the letter 'N'.

Click on any area to display what happens for real.



SWAG files are available at any of the SWAG support sites listed in the BBS list. Additionally, we upload the new snippets to COMPUSERVE, EXEC-PC and CRS in Canada with each release.

If you are an INTERNET user, you can ALWAYS find the files at the following:

SWAG World Wide Web Address

<http://users.aol.com/SWAGWWW/swag.html>

SWAG Direct FTP

<ftp://users.aol.com/SWAGWWW/files>

Vassa University (Finland)

<ftp://garbo.uwasa.fi/pc/turbopas>

Questions, comments and contributions to SWAG are always welcome. They can be sent to any of the SWAG SUPPORT team at their email addresses :

Gayle Davis - GDSoft

gdavis@betacon.com OR [72067.2726@compuserve.com](tel:72067.2726)

Kerry Sokalsky - FalconTech Consulting

kerry.sokalsky@canrem.com

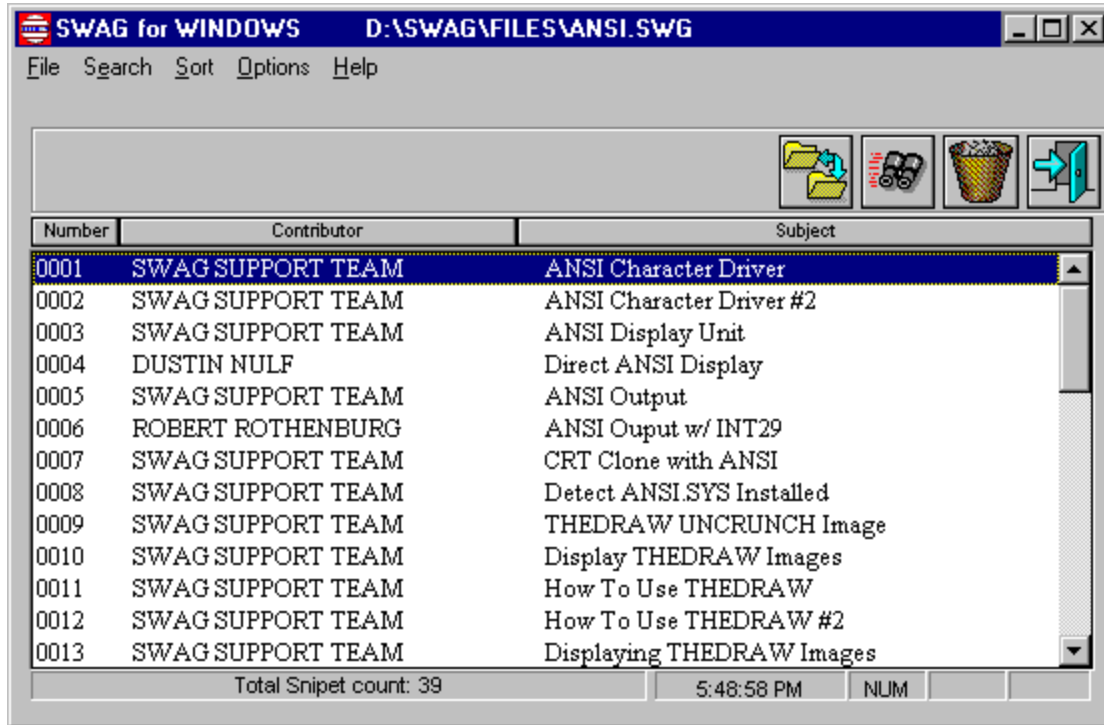
Jeff Fanjoy (Micky) - MatrixSoft(tm)

jfanjoy@interlog.com



SWAG Snippets Screen

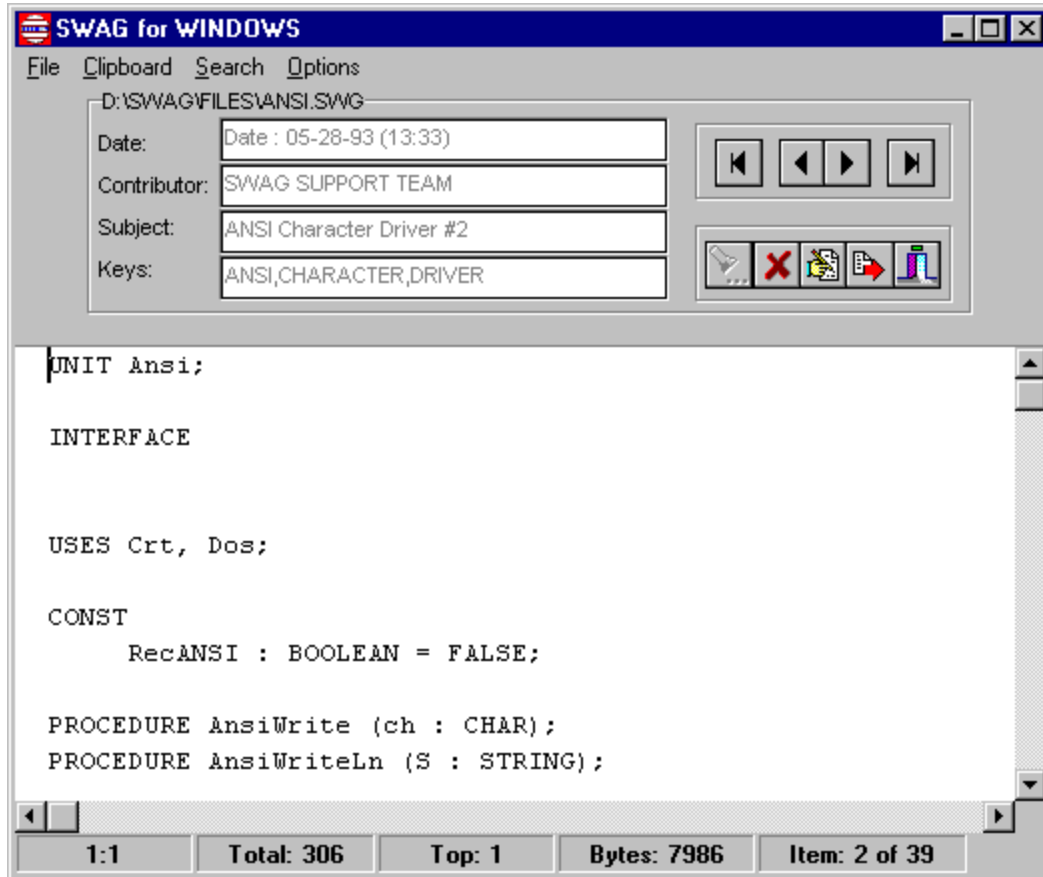
This is the Snippet List screen. Click on any of the buttons or screen areas to display more information about this screen.





Snippets Viewer Screen

This is the Viewer screen. Click on any of the buttons or screen areas to display more information about this screen.





Keystroke Command Summary

Certain shortcut keys are defined in [SWAG for WINDOWS](#). This makes it a little easier to get around inside the program :

- CtrlQF - Brings up the Search function
- CtrlL - Find Next
- <CR> - read the snippet or file
- ESC - Quit



Summary

At this point you should be able to enjoy **SWAG for WINDOWS**. The library contains a ton of really useful material, and you'll find that you won't be without it.

We hope that you find the READER easy to use, and the SWAG material valuable in development of your PASCAL programs.

ENJOY !!!!! and GOOD PROGRAMMING !!!

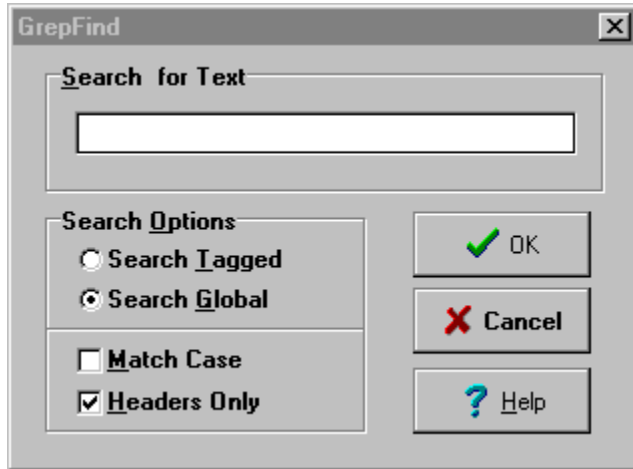
Gayle Davis, Kerry Sokalsky and Jeff Fanjoy
SWAG Support Team



Using the GREP function

The GREP (search) function. This is a VERY POWERFUL and useful function that allows you to find anything in the SWAG snippet collection. Entire text of all the snippets can be searched or you can do just a header search which is very fast.

Click on any area to display more info about dialog.



Enter a string to search for. You may search for a multiple occurrence of substrings using BOOLEAN operators AND (&) OR (|). For example, a search for THIS&THAT|THEM&THOSE would return all snippets containing both ORed phrases THIS&THAT OR THEM&THOSE.

In BOOLEAN Algebra, the AND operator takes precedence over the OR operator (except when using parentheses). This is NOT the case with the GREP function. You can use the PARENTHESES () to dictate which portion of the search string is to be processed first. If multiple levels of parentheses are used, the order is RIGHT to LEFT, starting with the innermost set of parentheses, wherever they occur.

As an example, in the phrase ((this|that)&(them&those)), (them&those) would be processed before (this|that) innermost to outermost. In other words, all snippets will be returned containing THIS or THAT AND they also will contain (THEM and THOSE).

Within a set of parentheses, order will be left to right. Construction of the search string itself requires combining the desired substrings together with the desired BOOLEAN operators. Without the parentheses, the search string will be processed logically. THIS|THAT&THEM&THOSE will return all of the snippets that contain THIS plus the ones that contain THAT & THEM & THOSE. You can see that this is totally different than what you'll get by using the parentheses.

Additionally, you can also include a date in the format MM/DD/YY, and ONLY records AFTER this date will be included. If you enter JUST the date, ALL SWAG snippets AFTER this date will be included. For example, entering CURSOR|ANSI&CRT|05/08/93 would search the SWAG packets for matches for CURSOR OR (ANSI AND CRT) occurring AFTER 05/08/93. Entering JUST 05/08/93 at the prompt would bring back ALL snippets AFTER 05/08/93 REGARDLESS of the subject.

Enter an empty string as the search string, and READER will return all snippets since the LAST SWAG release.

SWAGWIN will search ALL of the SWAG packet HEADERS in the CURRENT directory for matches based on your criteria. A processing box will appear, and all occurrences of your search string(s) or date matches will be written to a NEW SWAG file. Initially, this file is named GREPSWAG.SWG, and will be in the current directory. Upon completion of this GREP process, you will be asked for the file name. Enter any name AND directory you choose, and the file will be RENAMED and moved to that directory. Pressing ESCAPE WILL NOT save a file at all. This process allows you to create SWAG files containing ANY combination of material that you please.

You can ALSO search the ENTIRE SWAG snippet buffer for data. Just enter a tilde (~) character as the FIRST character on the search line. For instance to find all snippets containing CRT, you would enter ~CRT on the search line. ONLY the header of snippets is searched for matches. This a way you can look at all snippets by a certain contributor. You can also use multiple search criteria here. For instance, ~GAYLE DAVIS|GUY MCLOUGHLIN|JOE BLOW would bring back everything for each of these persons. This search method is VERY fast as on the headers have to be read. By the way, the same rules about AND/OR searching apply when search just the headers.

Beginning with version 3.0, we added KEYS to the SWAG header. This makes the searching function work MUCH faster, and you can use the EDIT HEADER function in the viewer screen to edit these search keys.

Click one of these buttons to do what is indicated.



Files Screen Menu Selections

File

Delete (CtrlD)

Delete the current highlighted file.

Exit (AltX)

Exit **SWAG for WINDOWS**

Grep

Opens up a find dialog box to search the snippet files for text.

Options

Exit On Escape

Allows SWAGWIN to exit when the escape key is pressed.

Font

Allows the selection of the font for the files window.

Edit SWAGWIN INI File

Uses NOTEPAD to display and edit the setting in the SWAGWIN INI File.

Set Extract Directory

Permits the selection of the default directory that will be used to extract snippets.

Reset Window Defaults

Resets the window coordinates to system defaults for SWAGWIN.

As you exit each screen of SWAGWIN, the size and location of each window is saved in the INI file. This set everything back to the "factory" settings.

Help

Contents

Displays the **SWAG for WINDOWS** help file.

About

The about box.

Credits

Displays the credits and e-mail addresses of the SWAG SUPPORT TEAM.



Snippet Screen Menu Selections

File

Open (Enter)

Opens the currently highlighted snippet

Delete (CtrlD)

Delete the current highlighted snippet.

Exit (AltX)

Exit the snippet window

Search

Find Text (F3)

Search for text in the snippet list.

Find Next (CtrlL)

Find the next occurrence of the previous search.

Sort

Number

Sort snippet list by number.

Contributor

Sort snippet list by contributor.

Subject

Sort snippet list by subject.

Options

Font

Allows the selection of the font for the snippet window.

Help

Displays the [SWAG for WINDOWS](#) help file for the snippet window.



Viewer Screen Menu Selections

File

Extract (CtrlE)

Extracts this snippet to your disk.

Kill (CtrlK)

Kills this snippet.

Edit Header (CtrlH)

Edit the snippet header information.

Print

Prints the snippet text on your printer.

Print Setup

Select the output options for your printer.

Exit (AltX)

Exit the viewer window

Clipboard

Copy (CtrlC)

Copy the highlighted text to the WINDOWS clipboard.

Select ALL

Selects ALL of the snippet text.

Search

Find Text (F3)

Search for text in the snippet text.

Find Next (CtrlL)

Find the next occurrence of the previous search.

GoTo Line (F4)

Go to a given line number in the text.

Options

Tab Expansion

Toggles tab expansion feature.

Tab Size

Set the tab size for the tab expansion feature.

Font

Allows the selection of the font for the viewer window.

Help

Displays the **SWAG for WINDOWS** help file for the viewer window.

The is the directory ONE LEVEL lower that the current directory. (ala WINDOWS 95) You can get there quickly by using the **BACKSPACE** key.

SWAG for WINDOWS was written by Gayle Davis, GDSOFT entirely in BORLAND DELPHI. The program may be copied and distributed freely providing that no fee is charged and it is not part of a package for which a charge is made.

Please report all bugs, suggestions, and problems to Gayle Davis:

- CompuServe ID #72067,2726.
- e-mail address 72067.2726@compuserve.com **OR** gdavis@betacom.com

© 1995, GDSOFT all rights reserved.

Links to this Help file

Toggles the Tag for the currently highlighted file. You can also use the "spacebar" to do this.

[Click here to see WINDOWS system information or the current time and date.](#)

Exit **SWAG for WINDOWS**.

Delete the highlighted **.SWG** File.

The current SWAG files path is shown here.

Double Click on any listed **.SWG** file to open it.

UnTag All currently tagged files.

Rename the currently highlighted file.

Click one of these to change the current disk drive.

This is the main body of the snippet. Use the scrollbars to move up or down, or you can also use Up/Down arrow keys and PgUp/PgDown. Text can be marked using the mouse, or by holding down the SHIFT key, and using the arrow keys. Once text is marked, it can be inserted in the WINDOWS clipboard by pressing CTRL+INSERT.

Shows information about the snippet, size, current line and column number.

Search the snippet for text.

The snippet header displays the date description, contributor, and keys. You can change this information by clicking on the EDIT SNIPET HEADER button.

Extract the snippet to your disk.

Edit the snippet header. Here you can change the contributor, keys and description.

Find NEXT text.

First, Last, Next or Previous snippet.

KILL this snipet.

Exit the viewer screen.

Exit the snippet window.

KILL the highlighted snipet.

Click on one of these to Sort the snippet list by Number, Contributor or Subject.

Search for text in the snippet list.

Double click on any highlighted item to view the snippet.

Extract the snippet to your disk.

Displays the total snippets in the **.SWG** file.

